

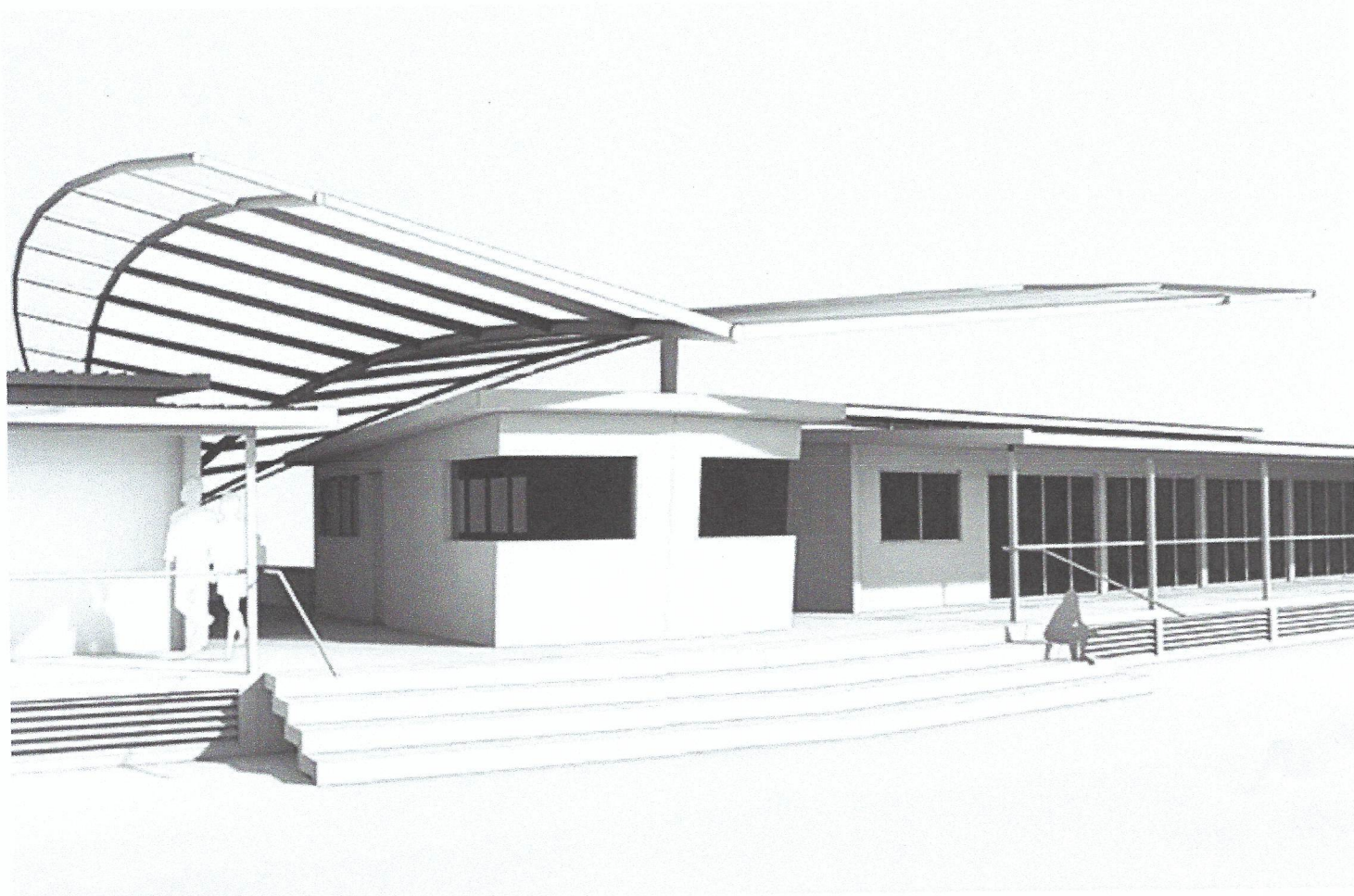
Sports pavilion design revealed

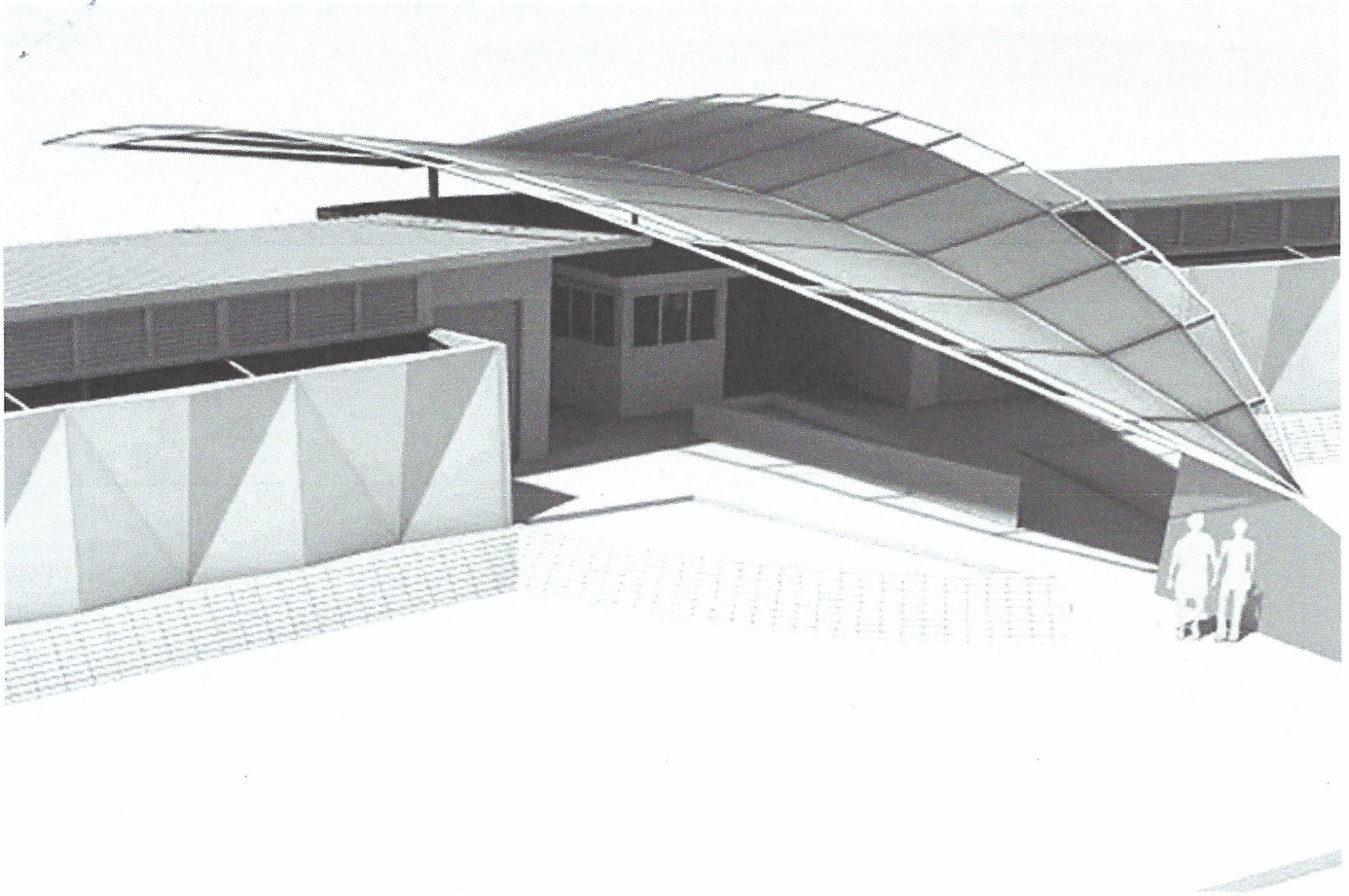
Local Matters

December 17, 2019 10:57am



Share





A concept design for the Metro Park sportsfields pavilion was revealed to the local board earlier this month.

The facility will provide a base for the local athletics, football, rugby and cricket clubs who use the grounds in Millwater. It will include changing rooms, toilet and storage facilities as well as a social hub.

At the Hibiscus & Bays Local Board Community Forum held in Brown Bay on December 5, Metro Park Community Sports Charitable Trust chair, Jeff Olufson, said that all going well, the pavilion could be operational in the first half of 2021.

The local board allocated \$108,322 to the Trust towards the design-build plans in 2018 as well as a further \$10,000 towards engineering design. Each club on the Trust has made an initial contribution of \$10,000 – “it’s important we have some skin in the game,” Jeff told local board members.

However, a lot more will be needed – the cost of the build is currently estimated “conservatively” at \$2 million – a noticeable increase on the April estimate the local board was given of \$1.4-\$1.6 million (*HM May 8*).

The Trust has had initial geotechnical work carried out and has applied to the Auckland Council Sport and Recreation Facility Fund.